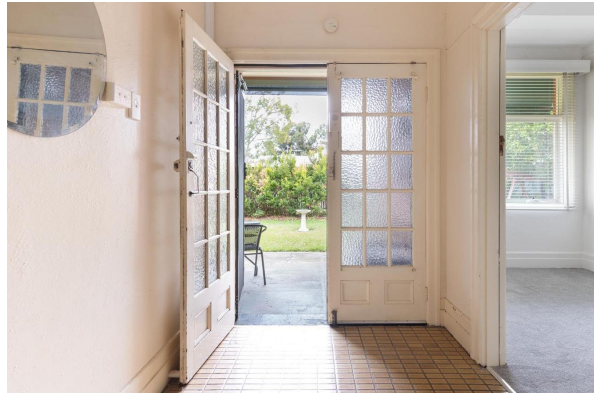


Nelson Alexander



16 Perry Street, Alphington VIC 3078

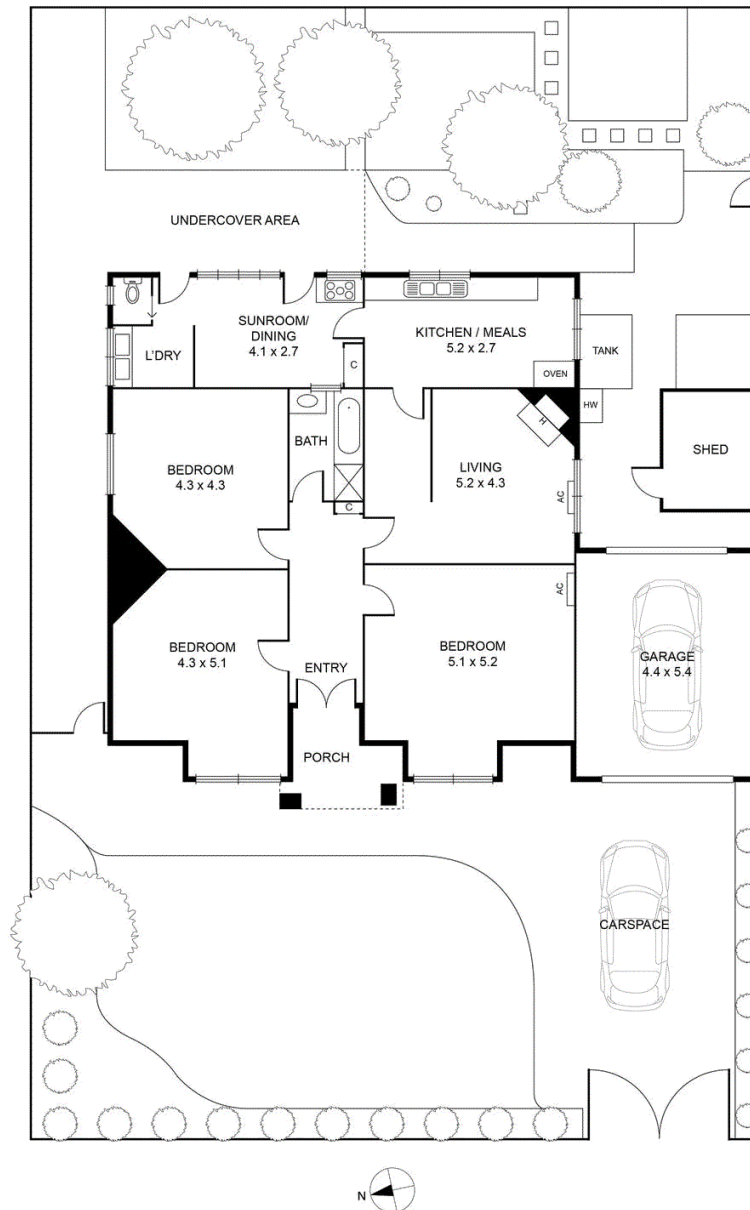
 3  1  1

Sold

18/05/2024 Undisclosed

With a rich history and timeless charm, this period home has been owned by the same family since the 1950s. Boasting well-preserved period character, lofty ceilings, and generous proportions, it offers three large bedrooms, an updated central bathroom with a separate bath, a family living room, a dining area, and an adjacent kitchen. Outside enjoy undercover dining and a private, leafy garden with pedestrian gate access to Tuckett Street. Other features include a secure garage, split system heating and cooling and garden shed. In a prime location it is an easy stroll to Yarra River trails and parklands, local shops and cafes, Alphington Station, buses, local schools, and the weekly Alphington Farmers Market, plus it is easily accessible to Station Street Village, High Street, Ivanhoe, and the Eastern Freeway.

16 PERRY STREET, ALPHINGTON



Disclaimer: Please note plans are indicative only and not drawn to exact scale. All dimensions are approximate. Potential buyers should satisfy themselves of any pertinent matters.