

# Nelson Alexander



**34 Spensley Street, Clifton Hill VIC 3068**

 3  1

**Sold**

13/04/2024 - \$2,100,000

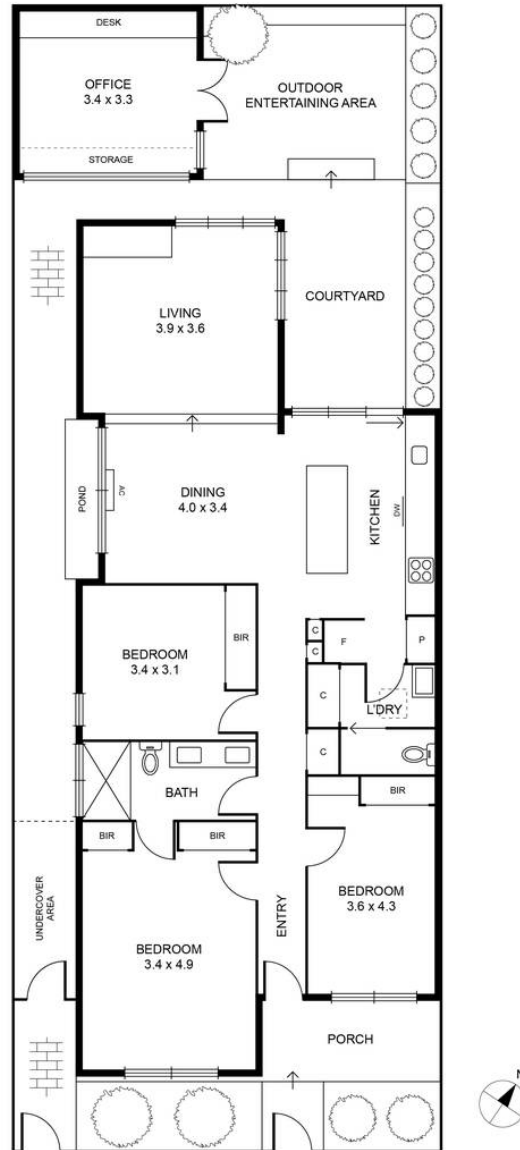
Fringed by local parklands in one of Melbourne's most liveable suburbs, this elegant and expertly designed residence boasts more than just its premier location. Throughout, clean lines and generously proportioned interiors allow the many design features to shine, from the characterful timber and stainless-steel kitchen to the lush, landscaped garden. Convenient for its proximity to Clifton Hill train station and the Queens Parade shopping strip, the property is also surrounded by peaceful parklands, including Darling Gardens, Merri Creek Trails, and Yarra Bend and Quarries Parks. - Comprising generous bedrooms, each with built-in robes, and primary featuring access to the stunning central bathroom, lit by clerestory windows and complete with large walk-in shower, double timber vanity, and mirrored, face-level storage. - Well-appointed kitchen with bespoke plywood cabinetry, island bench with ample storage, and stainless-steel benchtop and appliances, including di...

**Roland Paterson    Henry Rutherford**

p. 9417 1956  
m. 0417 367 997

p. 9417 1956  
m. 0468 998 001

## 34 SPENSLEY STREET, CLIFTON HILL



Disclaimer: Please note plans are indicative only and not drawn to exact scale. All dimensions are approximate. Potential buyers should satisfy themselves of any pertinent matters.